

Appendices **LEG 1**

6.1 SCHEDULE OF RACES Saturday 1st april 2023

- 08:30 Time the race layout is set up
- 09:00 Departure from pontoon, first group of boat
- 09:20 Departure from pontoon, second group of boat
- 10:52** 1st Warning signal

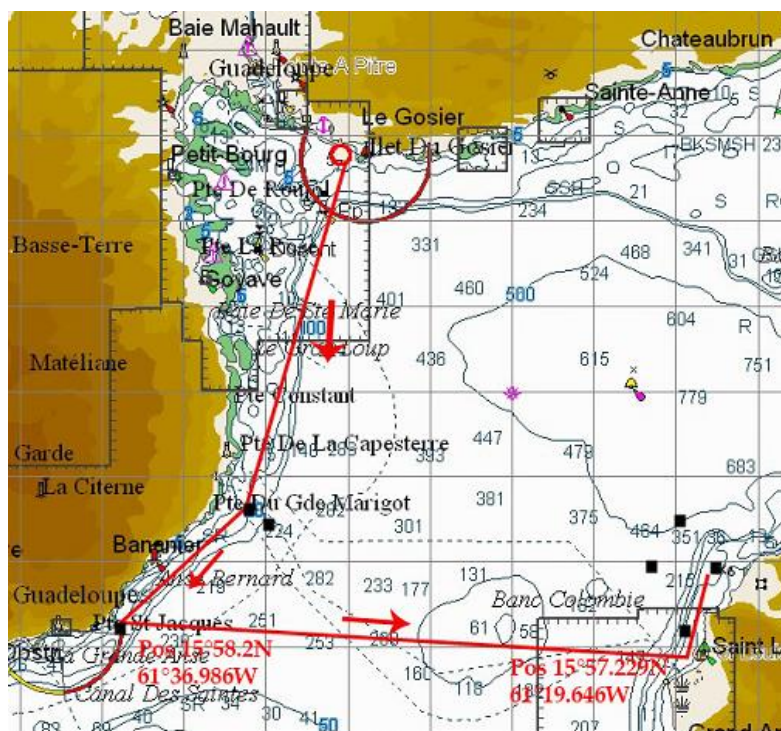
10 COURSE

Start: (SI 13.2)

- South cardinal buoy «Pp» pos (16°09,331N ; 61°31,201W) is to be left to starboard
- Special mark « Pointe constant » pos (16°04,35N ; 61°32,55W) is to be left to starboard
- Special mark « Anse du petit Marigot » pos (16°01,39N ; 61°33,24W) is to be left to starboard
- Special marl « de la pointe des bananiers » pos (16°00,16N ; 61°35, W) is to be left to starboard
- Yellow inflatable buoy “ Basse Terre” pos : (15°58.2N – 61°36.986W) is to be round and left to port
- Yellow inflatable buoy « Marie Galante » pos (15°57,229N ; 61°19,646W) is to be round and left to port
- Those two following WP (North limit) are to be left to port:
 - West WP position 38°N ; 50°W.
 - East WP position 39°N ; 40°W

***WP could be move or delate by Race Direction until first boat cross the 25°N
Information will be given on boat's mail box***

Finish line (14.1 in this appendices)



11 MARKS

Starting mark will be yellow inflatable buoy
 “Basse Terre” buoy will be a yellow inflatable buoy
 “Marie Galante” buoy will be yellow inflatable buoy
 Finish buoy : red buoy Pos (38°32N ; 28°37W)

12 AREAS THAT ARE OBSTRUCTIONS

13.4 RACE AREA

The race area is located in the south west of the “Ilet Gosier”

14.1 FINISH

The finishing line in Horta will be between the peer’s red light (38°32.03N 28°37.27W) to be left to port and a red buoy equipped with a flashlight to be left to starboard (38°32N 28°37W)

