

Appendices **LEG 2**

6.1 SCHEDULE OF RACES Sunday 16th April 2023

10:30 Time the race layout is set up

11:00 Departure from pontoon

12:52 1st Warning signal

10 COURSE

Start:

The start line will be between an orange flag located at the bottom of the Horta harbour red lighthouse and the course side of a RED inflatable buoy in the east to be left to starboard.

In order to securize the passage near the peer, a RED inflatable buoy will be set up. This buoy will materialize the port boundary of the starting line.

- Ré island to be left to port
- Antioche (tourelle) to be left to starboard pos (46°04,03N ; 01°23,70W)
- Chanchardon lighthouse to be left to port pos (46°09,80N ; 01°28,30W)
- Chauveau buoy to be rounded and left to port (46°06,57N ; 01°16,05W)
- Sud Lavardin buoy to be left to port (46°07,37N ; 01°14,22W)
- Finishing line (14.1 of this appendice)

11 MARKS

Starting mark will be RED inflatable buoy

Starting security mark will be RED inflatable buoy

Finish buoy : WHITE inflatable buoy Pos (46°07,071N ; 01°13,974W)

12 AREAS THAT ARE OBSTRUCTIONS

Traffic separation scheme are prohibited area and must be consider as obstacles

DST du Cap Finisterre

NW 43° 31.4N – 10° 05.15W

NE 43° 21.5N – 09° 37.7W

W 43° 19N – 10° 13.7W

E 43° 10.5N – 09° 44W

SW 42° 52.9N – 10° 13.7W

SE 42° 52.9N – 09° 44W

DST Ouessant

NE : 48°37.10N 5°11.9W

NW: 49°01.9N 5° 36.8W

SW: 48°42.5N 6°02.8W

SE : 48°29.3N 5°22.00W

DST Fastnet

NE : 51°22.9N 9°27.3W

NW : 51°21.2N 9°36.7W

SW : 51°15.4N 9°33.9W

SE : 51°17.2N 9°24.4W

DST Scilly Sud

NE : 49°46.00N 6°16.5W

NW : 49°46.00N 6°29.5W

SW : 49°35.5N 6°34.1W

SE : 49°35.5N 6°16.5W

DST Scilly W

NE : 50° 01.06N 6°32.9W

NW : 50°04.01N 6°48.5W

SW: 49°52.4N 6°53.7W

SE: 49°52.4N 6°36.7W

DST Scilly E

NE: 50°20.00N 5°51.11W

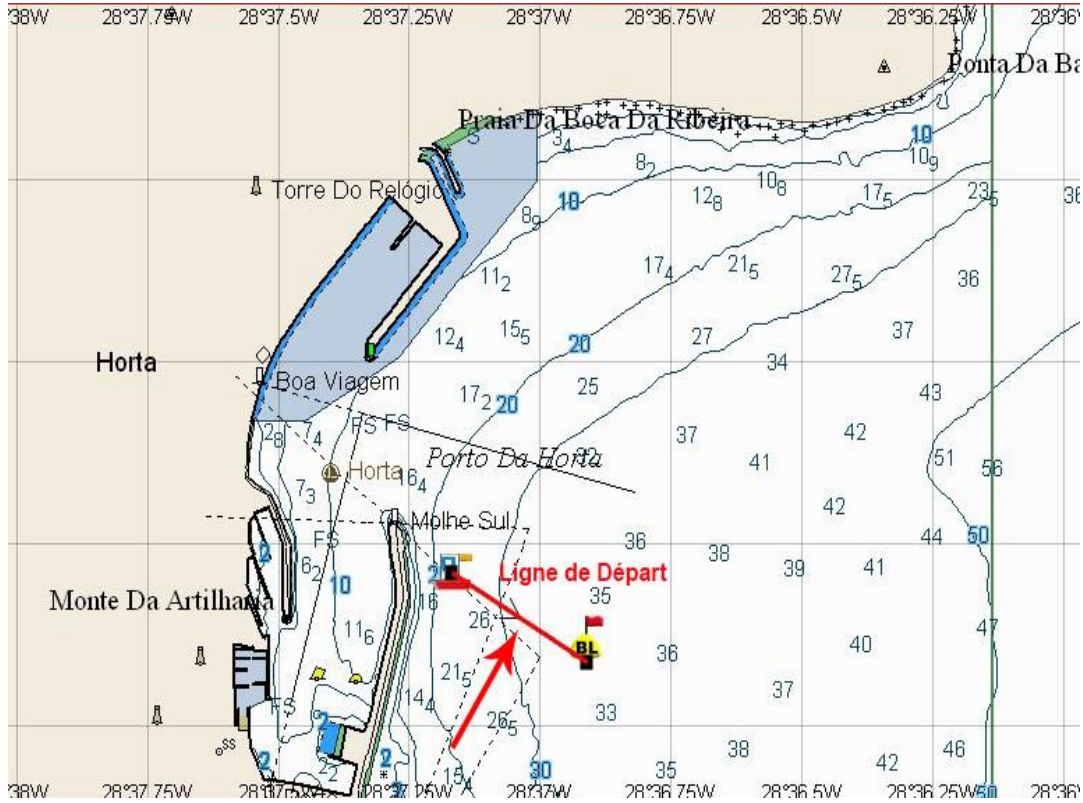
NW: 50°20.00N 6°04.9 W

SW: 49°53.5N 6°05.00W

SE: 50°00.9N 5°51.11W

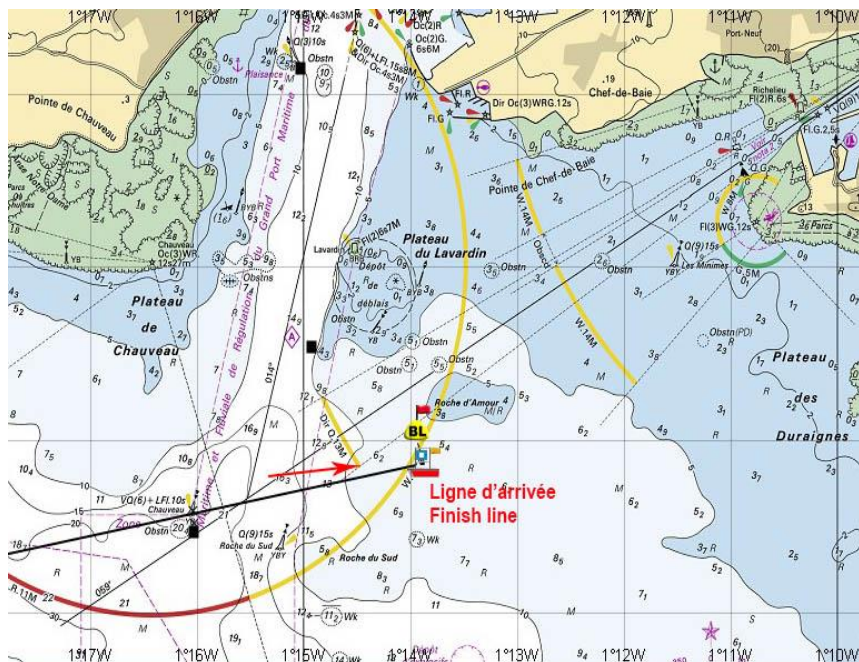
13.4 START AREA

Start area is located is the East of Horta Harbour



14.1 FINISH

The finishing line in La Rochelle will be between a WHITE inflatable buoy to be left to port pos (46°07,071N ; 01°13,974W) and the comity boat to be left to starboard. During nighttime the buoy will be equipped with a flashlight.



Finishing buoy in La Rochelle



19.1 : In La Rochelle, the race office will be located in the « Bassin des Chalutiers » old harbourmaster's office.

Boat's must be in race mode from 10 :30am Sunday 16th April 2023.